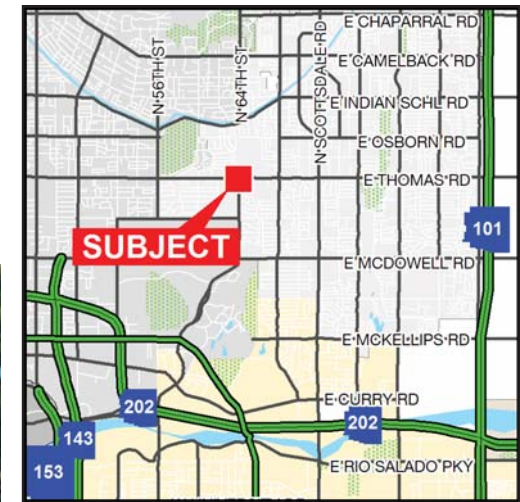


FOR
SALE

Arcadia Commons

6401 E Thomas Road, Unit 201
Scottsdale, Arizona



Property Features

- Building: ± 3,214 SF
- Reception Area, Conference Room, 12 Offices & Bullpen, Restrooms within Suite
- Nice Build-Out, Ready for Move-In
- Only Unit for Sale in the Project!
- 5 Covered Parking Spaces
- Elevator Served
- Bank Owned

Location Features

- Frontage on Thomas Road
- Over 30,000 Cars Per Day
- Centrally Located with Easy Access to Loop 101, 202 and the I-10 Freeway

MAJOR PRICE REDUCTION!

~~\$440,000~~ \$334,900 (\$104/SF)

NAI Horizon

Commercial Real Estate Services, Worldwide.

All information furnished regarding property for sale, rental or financing is from sources deemed reliable, but no warranty or representation is made to the accuracy thereof and same is submitted subject to errors, omissions, change of price, rental or other conditions prior to sale, lease or financing or withdrawal without notice. No liability of any kind is to be imposed on the broker herein.

contact information

Barbara Lloyd, CCIM

Vice President

602 393 6731 direct

602 808 3959 direct fax

barbara.lloyd@naihorizon.com

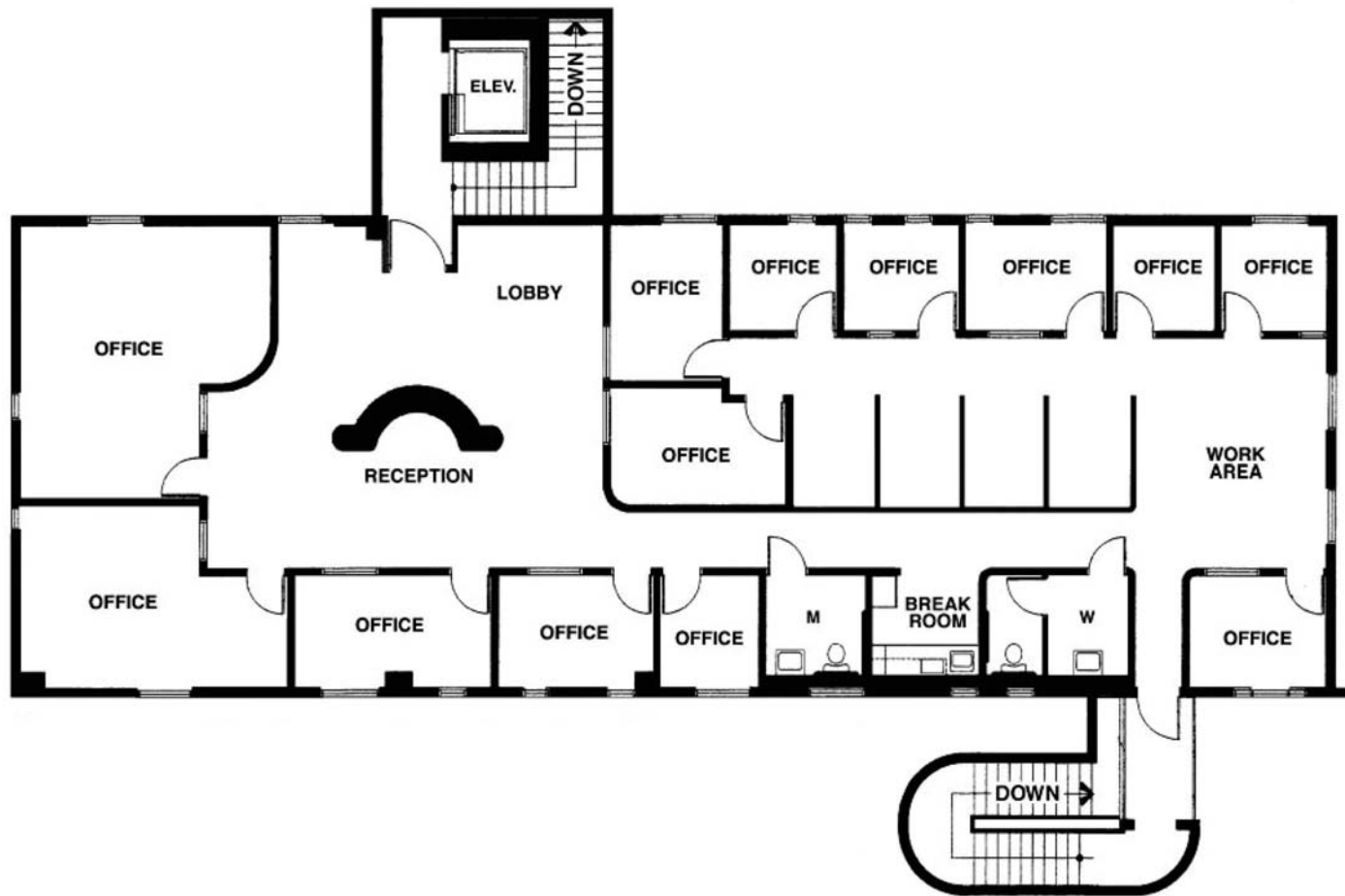
www.naihorizon.com

FLOOR
PLAN

Arcadia Commons

6401 E Thomas Road, Unit 201

Scottsdale, Arizona



Commercial Real Estate Services, Worldwide.

All information furnished regarding property for sale, rental or financing is from sources deemed reliable, but no warranty or representation is made to the accuracy thereof and same is submitted subject to errors, omissions, change of price, rental or other conditions prior to sale, lease or financing or withdrawal without notice. No liability of any kind is to be imposed on the broker herein.

contact information

Barbara Lloyd, CCIM

Vice President

602 393 6731 direct

602 808 3959 direct fax

barbara.lloyd@naihorizon.com

www.naihorizon.com

11/01/11